

# BIOCLEAR LS

## WHAT IS IT?

- BioClear LS is a specialized blend of beneficial microorganisms purposefully selected to aggressively target fats, oils, and greases.
- After FOG reduction is achieved, BioClear LS maintains a healthy microflora environment to keep wastewater systems operating efficiently.
- Each gram of BioClear LS contains 5 billion CFU (Colony Forming Units)

## WHY WOULD I USE IT?

If you want to:

- Destroy nuisance Fats, Oils and Greases
- Improve BOD, COD, and suspended solids levels
- Lower disposal costs by reducing sludge volume
- Optimize the biodegradation process
- Increase system performance and compliance
- Lengthen life spans of pumps and infrastructure
- Reduce foaming
- Minimize odour-causing H<sub>2</sub>S, mercaptans, amines, and ammonia

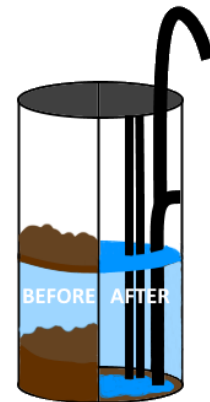
## WHEN CAN I USE IT? (OPTIMUM CONDITIONS)

### BioClear LS performs best:

- Within a range of pH 4.5 to 9
  - Optimum activity near pH 7
- Within a temperature range of 5 °C to 40 °C
  - Optimum activity as temperatures near 37 °C

## WHERE WOULD I USE IT?

- Lift Stations
- Grease Traps
- Manholes
- Sewer Lines
- Septic Tanks
- Lagoons



## STORAGE

### Shelf Life

Use within 1 year after opening.



Store in a cool dry place with good ventilation



Wash hands thoroughly after using



Avoid direct sunlight



## HOW DO I USE IT?

### Shock Dosage

(To establish a healthy bacterial population)

Lift Stations <100,000 Litres/day	3 pouches per day for the first week (M-F)
Lift Stations >100,000 Litres/day	6 pouches per day for the first week (M-F)
Lagoons	6 pouches per day for the first week (M-F)

*\*Increased dosage is used to quickly reinforce the biomass in the system.*

### Maintenance Dosage

(To optimize and maintain healthy bacterial population)

Lift Stations <100,000 Litres/day	1 pouch per day, 3 times per week (M,W,F), year-round
Lift Stations >100,000 Litres/day	2 pouches per day, 3 times per week (M,W,F), year-round
Lagoons	2 pouches per day, 3 times per week (M,W,F), spring-fall

*\*Dosage may vary based on flow, retention time, and water quality.*

## SPECIFICATIONS

<b>Description</b>	Tan coloured, free-flowing granular powder
<b>Working pH</b>	6.8 - 8.5
<b>Temperature</b>	Up to 45 °C
<b>Moisture</b>	Below 15%
<b>Bulk Density</b>	0.5 - 0.61 g/cm <sup>3</sup>
<b>Bacteria</b>	5 billion CFU per gram and a blend of 5 strains
<b>Nutrient</b>	Biological nutrients and stimulants
<b>Packaging</b>	10kg pail, 40 x 250g easy to handle water-soluble pouches

### Directions

**Lift stations:** For best results, mix appropriate dosage with room temperature water, let sit for **minimum** 30 minutes, then add the mix to the wastewater stream.

**Lagoons:** Add pouches directly to treatment area from spring through fall.

These methods will achieve optimum bacterial activity in your system. After 1 month of following recommended dosage you will start seeing noticeable positive benefits.

For Safety Data Sheet (SDS) and to learn more about our BioClear line of products call 1-800-387-7503 or visit us at [www.cleartech.ca](http://www.cleartech.ca).

