

# CLEARTECH®

Exclusive Distributor for  
TUFFSKID in Canada



Details are critical in chemical metering. Why ignore them when it comes to your skids? **TUFFSKID®** is a custom designed, plug n play, chemical metering solution that works right out of the box. Our enhanced roto molded, double wall one-piece skid shell is made of high-density polyethylene (HDPE) and designed to prevent leaks and minimize maintenance, saving time and money.

**TUFFSKID®** incorporates manifold blocks for a compact pipe configuration, fewer joints, fewer potential leak paths, and easy maintenance.

With a wide selection of piping materials, including PVC, CPVC, PFA, PVDF, and SS, and a variety of optional features like spray shields, color matching and manifold engraving, we can build a skid to meet virtually any safety or company guidelines.



Contact ClearTech:

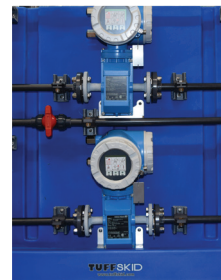
(800) 387 7503  
orders@cleartech.ca  
www.cleartech.ca

# TUFFSKID®

*Chemical-Feed Done Right!™*

## I/P - ZEROFOOTPRINT MODEL

- Single piece roto-molded design creating superior durability.
- Manufactured from high density polyethylene (HDPE) for extra chemical resistance.
- **TUFFSKID®** Manifold Blocks allow for a compact pipe configuration, fewer joints, fewer potential leak paths, and easy maintenance.
- Designed with built in containment, with a sloped deck and NPT fitting to allow any maintenance fluids or spills to transit out of the skid containment wall and into a holding tank or sump.
- Zero footprint is the thinnest chemical metering skid in the business.
- I/P can be used for mounting equipment or as an emergency station.
- **TUFFSKID®** SS wall mount brackets for ease of installation and relocation to a new area.
- Available in a variety of colors to match your plant layout, the design of the end user, OEM, and the ANSI/ASME guidelines used to identify the characteristic hazards of the contents.
- Small tanks and day tanks can be manufactured at the same time to match any skid color.
- Piping materials include PVC, CPVC, PFA, PVDF, and SS for proper chemical resistance.
- P&ID, 2D and 3D, drawings are available in SOLIDWORKS and other CAD formats for ease of incorporation into contract documents.



## TWO NAMES FOR TWO USES.

**As the I/P**, the panel, it can be used for mounting anything from Analytical instruments, Flow Meters, and VFD's to Chart recorders and Emergency Horns. The panel can be constructed in colors to match the **TUFFSKID®** being used for Chemical Metering or in a Bright Red for an emergency station.

**As the Zero Footprint**, this system becomes the thinnest chemical metering skid in the business. A full system, complete with pumps, is normally constructed with Sch 80 PVC piping with optional CPVC, PVDF, PFA and SS, and utilize the **TUFFSKID®** Manifold Block. **TUFFSKID®** Manifold Blocks are designed to give a superior robust mounting surface, to eliminate some of the joints required to install the required accessories and reduce a number of potential leak paths. Mounted on the **TUFFSKID®** Manifold Block are relief valves, gages with isolators, high pressure drain and flush valves and pulsation dampeners. The relief path for all **TUFFSKID®** in PVC is via clear Sch 80 PVC back to the inlet header. Inlet headers come complete with Y strainer and inlet valve.

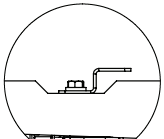
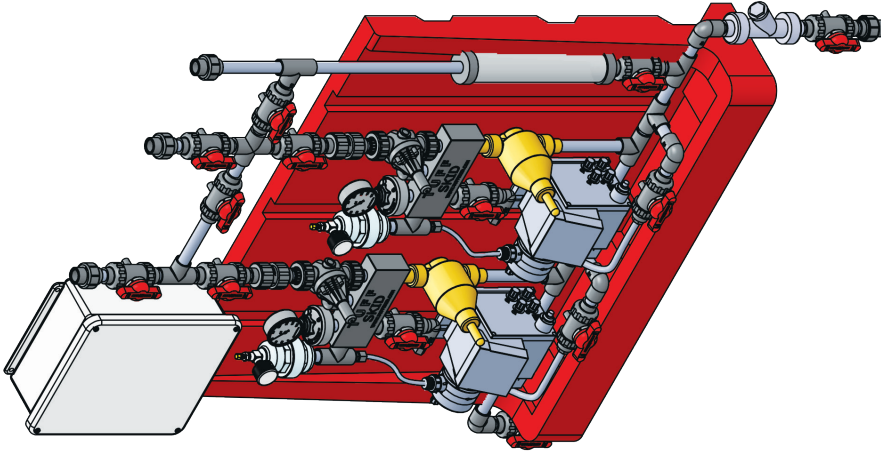
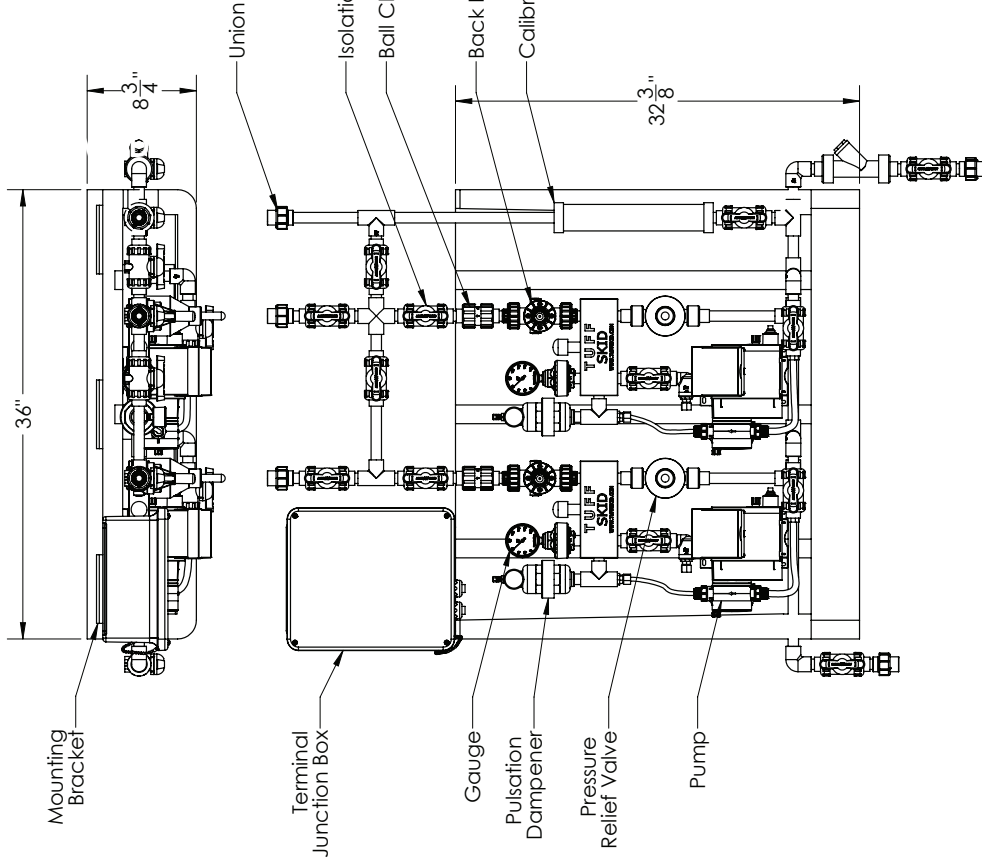
The Zero Footprint **TUFFSKID®** can be wall mounted in areas where putting a full skid was impossible before.

Both systems, the I/P and the Zero Footprint **TUFFSKID®**, utilize the SS wall mounting bracket and just like the larger **TUFFSKID's®**, are available in any color. The system in either set-up is the most functional as a temporary system and fits in the back seat of any mode of transportation for relocation.




**TUFFSKID's®** are infinitely customizable.

**DIMENSIONS** 36" w x 8 ¾" d x 32" h

# I/P - ZERO FOOTPRINT WALL MOUNT MODEL



DETAIL A  
SCALE 1 : 5

			
APPROVED BY / DATE		UNLESS OTHERWISE SPECIFIED:	
MAX FLOW		DIMENSIONS ARE IN INCHES	
MAX PRESSURE		TOLERANCES:	
BPR SETTING		FRACTIONS 1/32	
RELIEF SETTING		ANG-MACH 0 30° BEND 2	
INSPECTION DATE		DECIMALS .XX	
DOCUMENTS ARE REPRESENTATIVE ILLUSTRATIONS COMPONENT LOCATIONS SUBJECT TO CHANGE		HOLE .XX	
APPLICATION		MFG APPR.	
		Q.A.	
		INTERFERT GEOMETRIC TOLERANCING PER ASME Y14.5M	
		MATERIAL	
		PERP .003/IN	
		STRAIGHTNESS .005/IN	
		FLATNESS .005/IN	
		THREADS: CLASS 2A	
		INTERNAL: CLASS 2B	
		MACHINED SURFACES: ✓ U.O.S	
		DO NOT SCALE DRAWING	
		TITLE: IP Assembly, Options	
		PART NO.	
		REF.	
		DATE: 2020-01-14	
		NAME: JNR	
		DRAWN:	
		CHECKED:	
		BPR APPR.:	
		MFG APPR.:	
		Q.A.:	
		STRAIGHTNESS .003/IN	
		FLATNESS .005/IN	
		THREADS: CLASS 2A	
		INTERNAL: CLASS 2B	
		MACHINED SURFACES: ✓ U.O.S	
		SCALE: 1:10 WGT: LBS	
		SIZE QUOTE NO.	
		REV <b>01</b>	
		SHEET 1 OF 1	



Exclusive Distributor for  
TUFSKID in Canada

(800) 387 7503  
orders@cleartech.ca  
www.cleartech.ca